

CanPhish Platform Datasheet

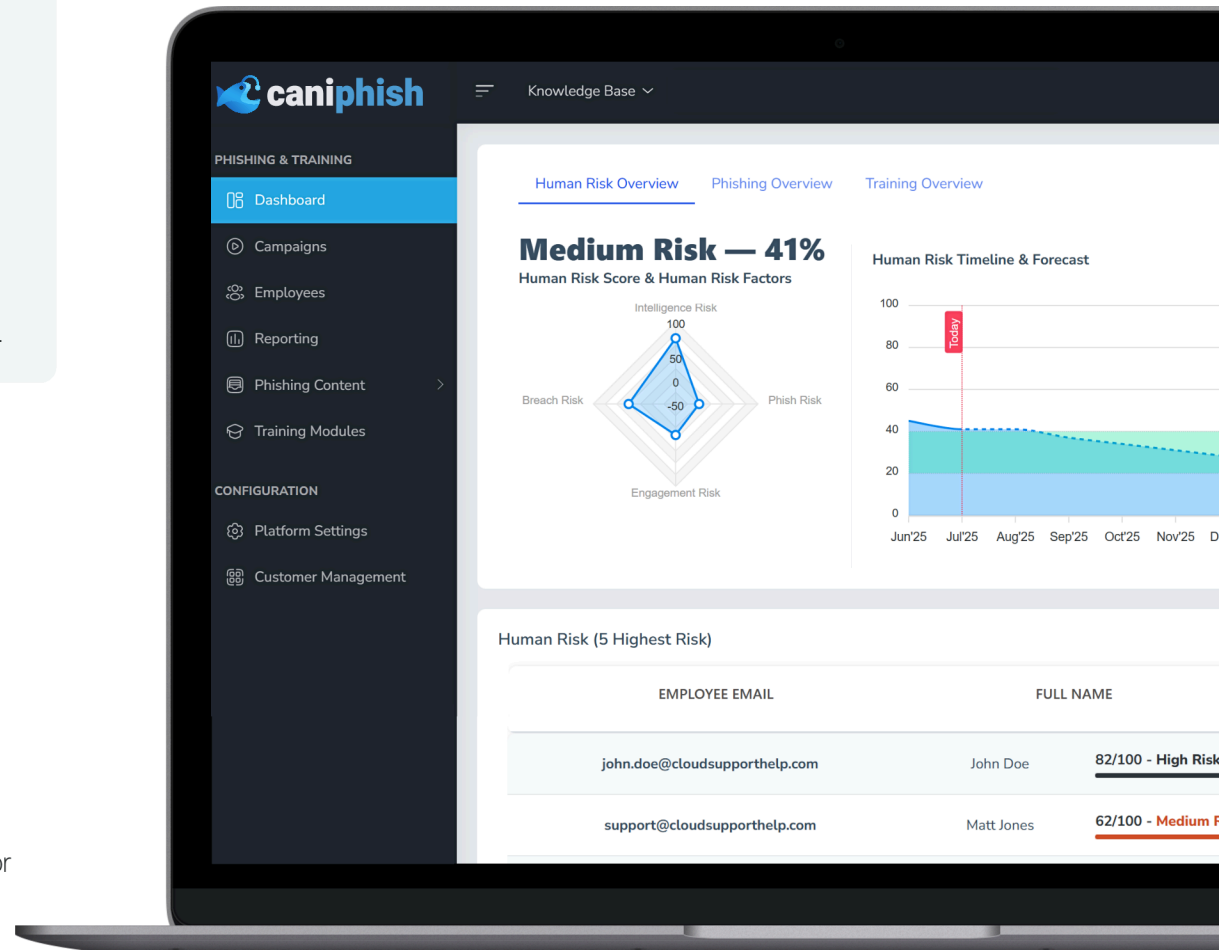
More Capability. Less Complexity.

CanPhish was founded with the goal of making cyber security training accessible to every organization. Our platform provides ultra-realistic phishing simulations and high-quality security awareness training, all at a fraction of the cost of our competitors.

We've eliminated the traditional aggressive sales approach and run a leaner business without an army of salespeople. We pass these savings to our customers. Our platform is our sales tool and it speaks for itself. We offer a well-equipped and perpetual free tier that is the perfect testing ground for anyone looking to get started.

Key Features

- ✓ SOC 2 Audited & GDPR
- ✓ Compliant
- ✓ Perpetual Free Tier
- ✓ Platform White-Labeling
- ✓ Single Sign-On (SAML)
- ✓ Configurable Cloud Storage
- ✓ Configurable Infrastructure
- ✓ Managed Mail Servers
- ✓ Managed Phishing Websites
- ✓ Report Phish Add-On
- ✓ Clone Reported Phishing Emails
- ✓ Sender Domain Spoofing
- ✓ Conversational AI Phishing
- ✓ Security Awareness Program Generator
- ✓ Email Template Editor
- ✓ Training Module Editor
- ✓ Multi-Language Functionality
- ✓ Animated Training Videos
- ✓ Gamification
- ✓ Human Risk Dashboard
- ✓ Automated Reporting
- ✓ Interactive Email Sandbox
- ✓ AI-Powered Content Generator
- ✓ AI-Powered Email Analysis
- ✓ Deepfake Voice Phishing
- ✓ Dark Web Monitoring
- ✓ Entra ID & Google Workspace Integration



Leaving Legacy Providers in the Dust

Why CanIphish



Powerful Enterprise Phishing & Training

CanIphish is a powerful enterprise platform for phishing simulations, security awareness training, reporting, and human risk reduction. It gives teams the control, depth, and scalability needed to run effective programs from one platform.



Fully Self-Serve and Competitively Priced

Built for speed and simplicity, CanIphish combines enterprise capability with transparent self-serve pricing. Teams can launch quickly, stay in control, and scale their training programs without the usual cost or complexity that comes with legacy vendors.



AI-Powered Content Creation

Create realistic phishing emails and engaging training content faster with AI-powered tools. This helps teams save time, improve quality, and build more relevant campaigns and learning experiences at scale.



Advanced AI Analysis and Investigation

CanIphish helps teams investigate suspicious emails faster with AI-powered analysis, embedded coaching, and interactive sandboxing. This gives users and administrators deeper visibility without putting their environment at risk.



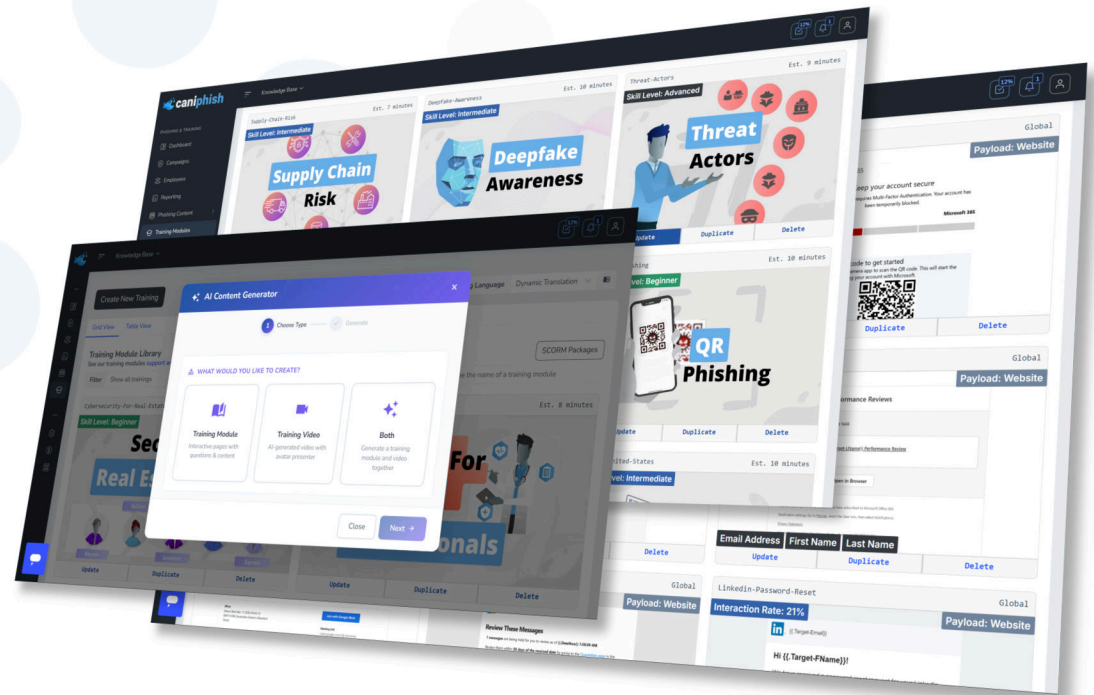
Enterprise-Ready Features

From phishing simulation and training through to reporting, integrations, and platform controls, CanIphish is built to support mature security programs without adding unnecessary overhead.



Global-Ready Security Awareness

With multi-language support, CanIphish offers content in 75 written and 29 spoken languages, enabling you to create campaigns tailored to your globally diverse workforce and deliver an inclusive cybersecurity training experience.



**SOC2
TYPE II
Audited**



**GDPR
COMPLIANT**

Stop Simulating for Compliance. Start Simulating for Real Attacks.

Key Phishing Simulation Features



135+ Email Templates

Designed to simulate various real-life attack scenarios, these ultra-realistic phishing emails are an effective tool for preparing your employees for the threats they may encounter.



75+ Phishing Websites

Leverage our collection of phishing websites meticulously designed to replicate the appearance of genuine sites. These realistic simulations are designed to entice employees to interact with them.



AI-Powered Phishing

Create highly realistic phishing emails in seconds with our AI-powered email generator. Simply describe the scenario you want to simulate, and CaniPhish will produce tailored phishing content instantly so you can build relevant campaigns at scale.



Customizable Content

Enhance your experience with customizable phishing content, instantly clone reported real-world phishing, or create your own. Our platform gives you the flexibility to design bespoke phishing campaigns tailored to your organization.



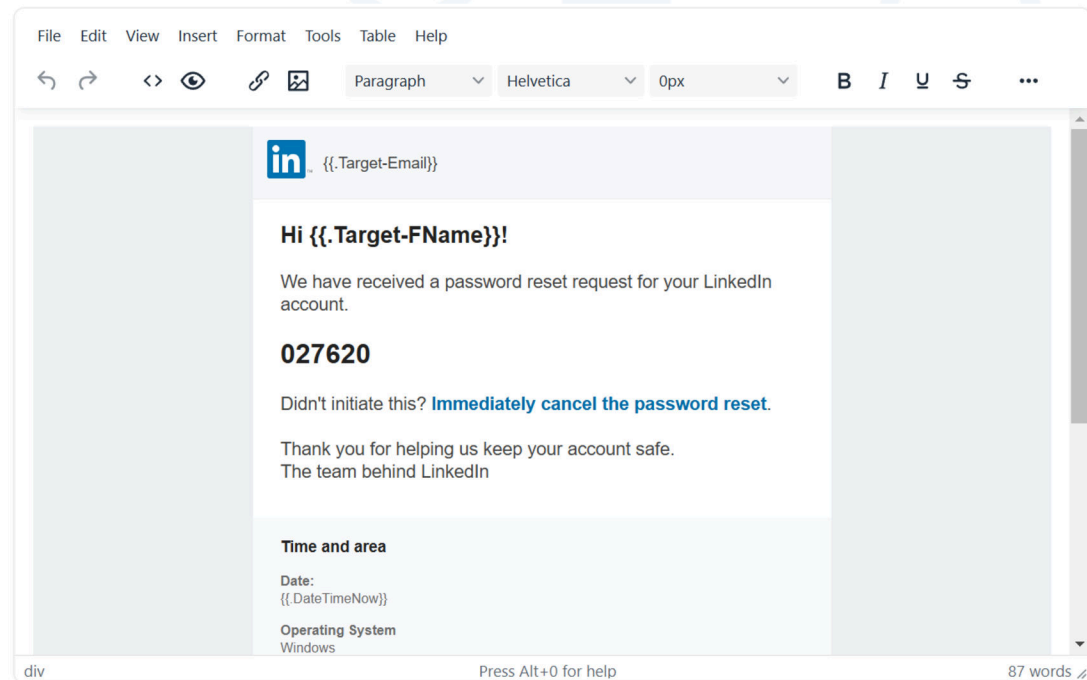
Sender Profiles & Domain Spoofing

Elevate your phishing simulations with custom sender profiles and domain spoofing capabilities. Create authentic-looking phishing campaigns that test and strengthen your organization's defenses against sophisticated threats.



Multi-Vector Attack Experience

Simulate a wide range of modern phishing threats with support for email, phishing websites, attachments, conversational email, and deepfake voice phishing scenarios. This gives your team more realistic, varied training that better reflects how real-world attacks happen today.



2M+

Phishing Emails Sent

500K+

Employees Fell For
The Phish

135K+

Employees Reported
A Phishing Email

Training Built for Engagement. Not Box-Ticking.

Key Security Awareness Training Features



Comprehensive Training Library

Access a growing library of 60 micro-learning training modules covering a broad range of security awareness topics. Each module includes a short video and combines practical educational content with quiz-based learning.



AI-Powered Training Content Generation

Create fully interactive security awareness training in minutes with AI-powered tools that generate complete modules, including videos and quizzes. This makes it easy to build highly relevant training on niche topics tailored to your team.



Customizable Training Modules

Design custom modules effortlessly with our intuitive training module editor. Create content that aligns with your organization's goals and deliver a personalized experience that truly resonates with your employees.



Learner Engagement Through Gamification

Turn learning into a more engaging experience with badges, leaderboards, certificates, and progress-based reinforcement. This helps increase participation, improve completion rates, and make security training feel less like a checkbox exercise.



On-The-Spot Learning

The most impactful learning opportunity occurs immediately after a user clicks on a phishing link. They are redirected to an interactive landing page that educates them on recognizing and avoiding future phishing attempts.



Human Risk Management

CanIPhish meticulously tracks every employee interaction to build a comprehensive profile of their phishing risk, badge score, security IQ, and overall human risk. This data helps identify organizational vulnerabilities and strengths.



500K+

Active Learners
Worldwide

1K+

Organizations Trust
CanIPhish

60+

Countries With
Active Users